



**Real Estate, Development,
Construction, Property Management,
Food&Beverage, Sport Club**

THE ANATOMY OF ART HOUSE GROUP

An amalgamation of different skill factors and groups cooperating synonyms together in achieving the same aspirations innovations, and goals becomes a formidable unit. This infusion of contributing factors delivers the highest standards of excellence. In harmony together 3 Kings Construction, Escore Properties solution, 23 degree, Teem, Art Idea, Mirage Cafe and Dynamic Club, exudes innovation and are a prerequisite for success. Taking in to account, Creative Design Concepts, Cultural environments, Self-improvement and Economic values Art house development remains unequalled in exceeding expectations.



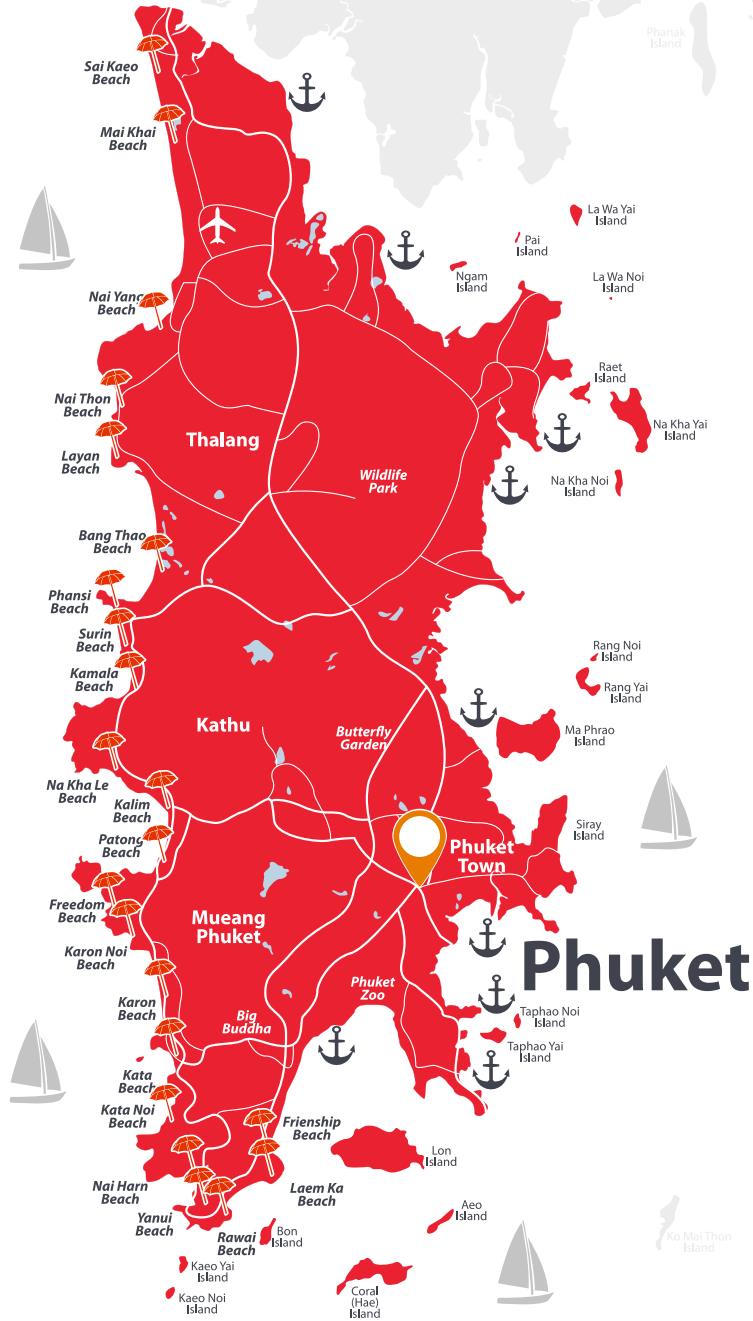
ABOUT ISLAND

Stunning tropical sunsets, spectacular landscape and warm azure sea awaits you in Thailand's heart of tourist destination. Phuket provides a combination of perfect beaches, modern facilities, superior hospitality, great cuisine and good quality accommodation. The island's wealth means that it has an excellent infrastructure, great roads, world class hospitals, schools, shopping-centers and all of the other comforts you have come to expect from a western lifestyle. It also has the highest cost of living of any Thai province, although it's still very affordable by western standards and even a modest income from home can make you a person of leisure here.

Phuket's location in the Andaman Sea has made it a home for foreigners, and there are plenty of services available to make it easy to relocate to Phuket, whether for a season, a few years or to retire.



Phang-Nga



COMPANY PHILOSOPHY

An amalgamation uniting force, consisting of combined multifunctioning businesses' and life style choices.

◆ **Our competitive advantage**

Art house company powerful culture of sales and services means our people are both expert and committed to excelling for our customers.

◆ **Our business model**

Our business model is built on delivering exceptional results for our clients. Art house company is fundamentally a people's business and our proposition is based around knowledgeable, experienced and committed people who provide an excellent service for our valued customers.

◆ **Our business ethics**

For many of us decision making can be a stressful process that requires the most trusting and open of relationships. Art house company business model is built upon our values of honesty and integrity and we work hard to ensure that everything is done with total transparency.

FAMILY

Family values and well being

Our traditional and cultural values at arthouse company pertain to the family's structure, the high moral and ethical principles traditionally upheld and transmitted within a family. Honesty, commitment, industry, faith, beliefs, attitudes, and ideals are all imperative fundamental ethics and morals we hold and value so dearly within our group. Wellness is an active process of becoming aware of and making choices toward a healthy and fulfilling life. Wellbeing is the state of living a healthy lifestyle, wellness aims to enhance well-being ...it can enhance and affect, mental and social well-being.



PROUD RESIDENCE KARON



PROJECT CONCEPT. ASPIRE TO INSPIRE.

This well-defined and contemporary styled Condominium captivates a feeling of intimacy, calmness and absolute serenity. Uniquely the Inspiration for this development was conceived from its natural tropical surroundings, inspiring our team of architects to produce a simple but stunning building. Architecturally this modern, tropical and contemporary design was intentionally designed to bring emphasis to maximize the views. Its unique fusion of light colors, simplicity of shapes and characterized interiors gives a real feeling of spaciousness, and is a true reflection of its natural habitat and location. Featuring a wide range of facilities to facilitate every need. The common area grounds and tropical roof top gardens distinctly expresses luxury living in its full glory, whilst the additional surroundings and proportionate living area's zones reflect simplicity and calmness in its pure form.



 [VISIT WEBSITE](#)

PROUD RAWAI



PROJECT CONCEPT

This well Defined and Romantically styled Condominium captivates a feeling of intimacy, calmness and absolute serenity. It's unique fusion of light colors, simplicity of shapes and characterized interiors gives a real feeling of spaciousness, and is a true reflection of its natural habitat and location. Featuring a wide range of facilities to facilitate every need. The common distinctly expresses maximalism in its full glory, whilst the additional surroundings and proportionate living area's zones simplicity and calmness in its pure form. Truly for the romantic living Proud.



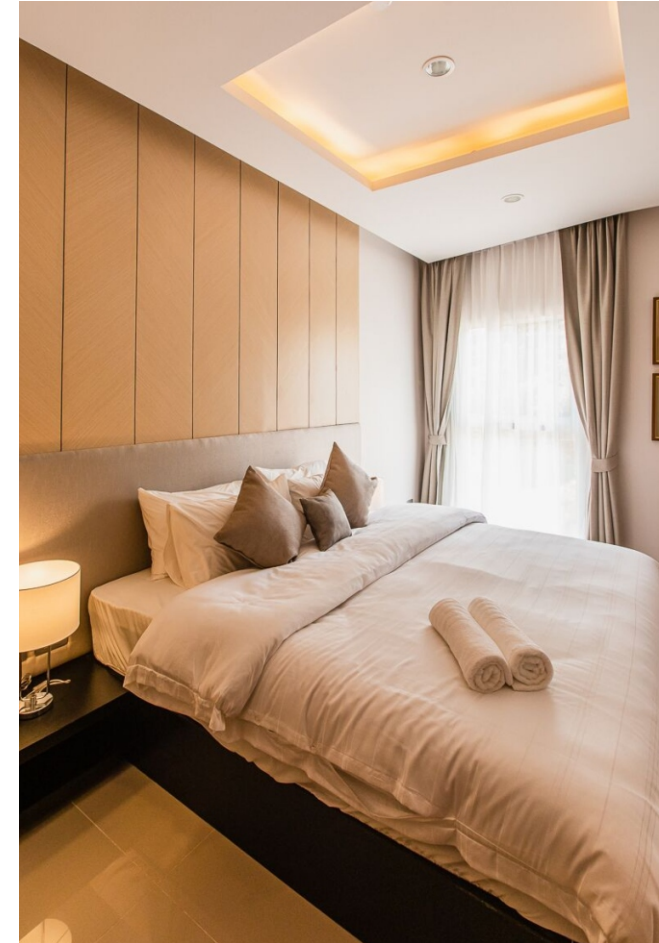
 [VISIT WEBSITE](#)

PALMETTO CONDO



PROJECT CONCEPT

Palmetto architectural style is the Asian mix designed combine with the lines and colors of nature; inspired by an idea of living in a greenery oasis. The architectural creates a harmonic green living with warm and peaceful atmosphere. Due to the minimal space, each unit layout is specialized design to maximize functional usage. Stylish unit at Palmetto is completed fully finished with details designed to add the sense of luxury living.



 [VISIT WEBSITE](#)

PALMETTO PARK



PROJECT CONCEPT

A true reflection of past and present opulent living. This Classic and contemporary iconic styled development has been accurately designed to achieve sustainability and functional comfort at its best. Its unique fusion of light colors, simplicity of shapes and characterized interiors gives a real feeling of spaciousness, and comfort second to none. The common area grounds and botanic gardens, distinctly expresses luxury living in its full glory, whilst the additional surroundings and proportionate living area's zones reflect simplicity and calmness in its pure form.



 [VISIT WEBSITE](#)

FIFTH ELEMENT



PROJECT CONCEPT

Fifth element villas are unique private comfort in a well thought out cozy and atmospheric environment. Fifth Element villas are in an opulent exclusive development and location, located amidst beautiful and serene surroundings... water lakes and trees opulent and tranquil settings a private plaza to shop, eat and indulge oneself. with its exquisite spas and treatments, and just a short drive to Bang Tao beach. A perfect combination that contemporizes modern design with an Asian twist...



 [VISIT WEBSITE](#)

ABOVE ELEMENT



PROJECT CONCEPT

Uniquely designed apartment complex Above Element inspires freedom to express your own preferable live style signifying wealth and stability.

The Above element has been chosen for its unique form of style and grace, symbolizing a reflection of eternal prosperity to the residence and its owners.

Living at the Above feels like a tropical resort, while not far from the conveniences of the pleasure of beachside life.

Above element home design was guided by simplicity honesty and purity. Close to the main road, nearby schools, cafes shopping, supermarkets, beach and views to enjoy sunset.



 [VISIT WEBSITE](#)

ABOVE ELEMENT VILLA



PROJECT CONCEPT

Above Element Villas inspires freedom to express your own preferable live style signifying wealth and embodies stability and ensues peacefulness. Villas consist of high-quality materials both imported and local resources. Living at the pool villas feels like a tropical resort, while not far from the conveniences of the pleasure of beachside life. Luxurious and compelling lifestyle with privacy amongst a rising economic district.



 [VISIT WEBSITE](#)

HENNESSY RESIDENCE



PROJECT CONCEPT

A luxurious apartment complex located just 100 meters from Karon Beach in the southern part of Phuket Island. Here, a full range of premium services is provided: restaurants with exquisite cuisine, 5 pools on the premises, lobby, reception, and library. Rooftop relaxation areas and cocktail bars Moët, Hennessy, and Cohiba cigar lounge are situated atop the buildings. The complex is situated in a well-developed area of the island, with world-class restaurants, boutiques, and entertainment venues in close proximity, offering a rich selection for your leisure activities.



 [VISIT WEBSITE](#)

MIRAGE CAFE BAR & RESTAURANT



PROJECT CONCEPT

A Combination of Restaurant and Bar. Implementing of a great food and activity experience. The atmospheric coffee shop on the ground floor serving fabulous food from Morning to Late Noon with relaxing ambiance and the best menu in the rooftop restaurant with panoramic sunset of Rawai beach. Comfortable atmosphere and magnificent ocean views complete an unforgettable experience cooking, dining and service



LIFESTYLE. DYNAMIC CLUB

Dynamic Club is Phuket Town's friendliest community of likeminded people. We are intensely focused on success and offer our members the best in functional fitness and selfdefence training services all under the one roof. We are home to a registered CrossFit affiliate, CrossFit DCHKT offering a full CrossFit program with innovative programming that gets results. Our facility also offers a purpose built open air Muay Thai boxing space and a program that makes training a pleasure. Our coaches are professional, committed, experienced and fun!



GROUP OF COMPANIES

WE BUILD STABILITY, STARTING FROM THE UNDERGROUND, FIGHTING THE SKY.

The group of our companies bring the experience and academic knowledge of the construction industry combined with new technology, including construction management by our own experienced engineers and architects. Also provide services about water treatment tank, water tank, and water system equipment for good water and wastewater.

We are committed to develop and control product quality to have high efficiency, strength and durability with long useful life for environmental conservation and response to satisfaction and worthiness of customers.

Having good awareness about customer service with integrity, sincerity, rapidity, correctness, precision and safety, we will achieve objectives to meet legal and environmental standards.



OUR TEAM, CULTURE AND PEOPLE

Art house company prides its self on its meritocratic culture, recruiting high potential candidates and providing a path to leadership positions, where possible we develop and promote sales people from within to ensure our best people progress into positions where they have the greatest impact on our customers. Our training and development goal is to create the greatest team of real estate agents, developers, personal fitness trainers, masterful chefs and additional staff in the industry with a clear focus on professionalism, integrity and a strong work ethic. Art house company people are highly motivated to deliver exceptional results for customers.





Info@arthouse.asia

