



# Avenue Boutique CONDOMINIUM





A BRAND-NEW LOW-RISE CONDOMINIUM

MORE THAN JUST A CONDOMINIUM

Slow down and  
enjoy your life with

## GROUND POOL



Keep calm  
and enjoy the view

## ROOFTOP GARDEN





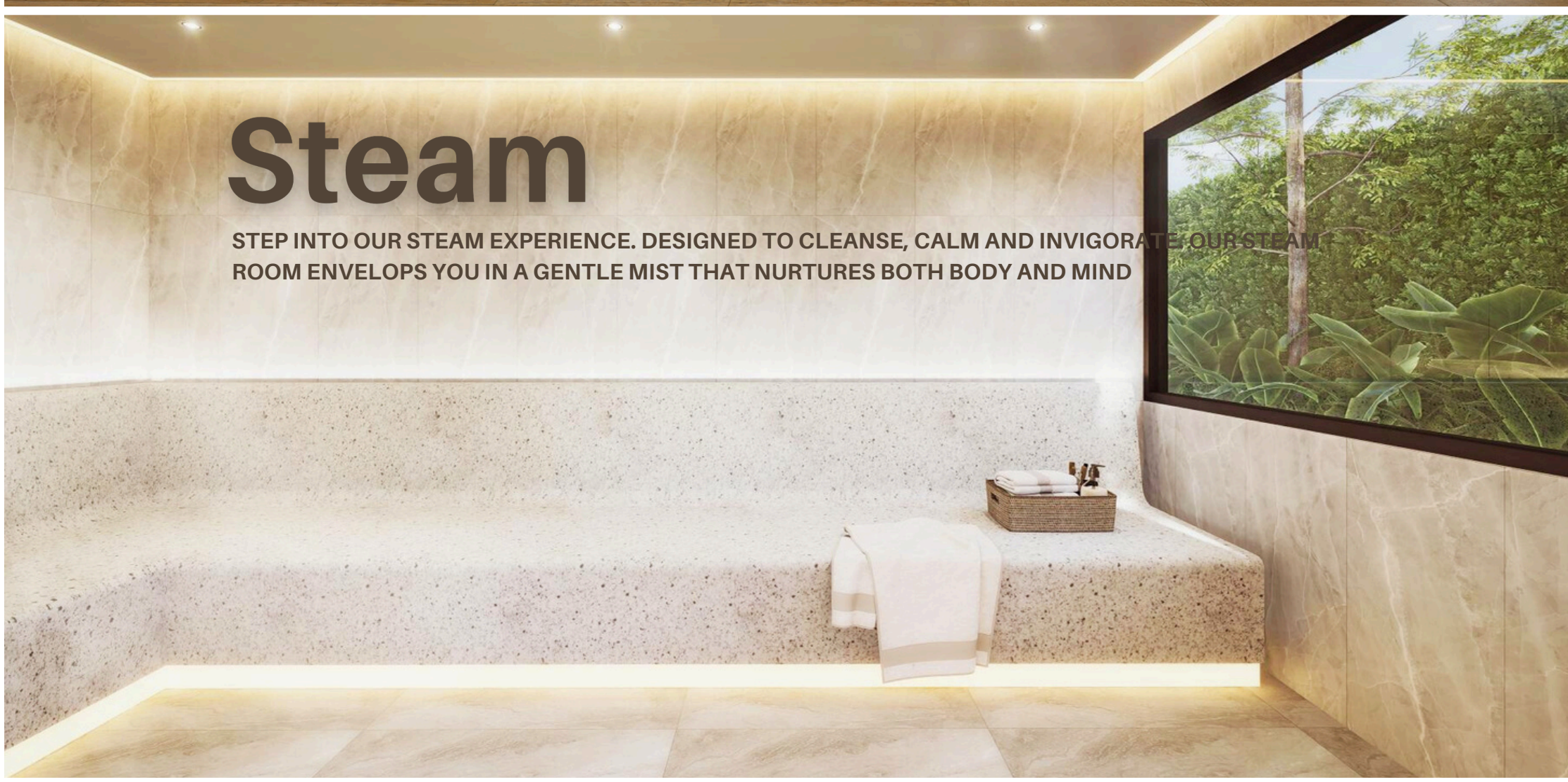


# Lobby



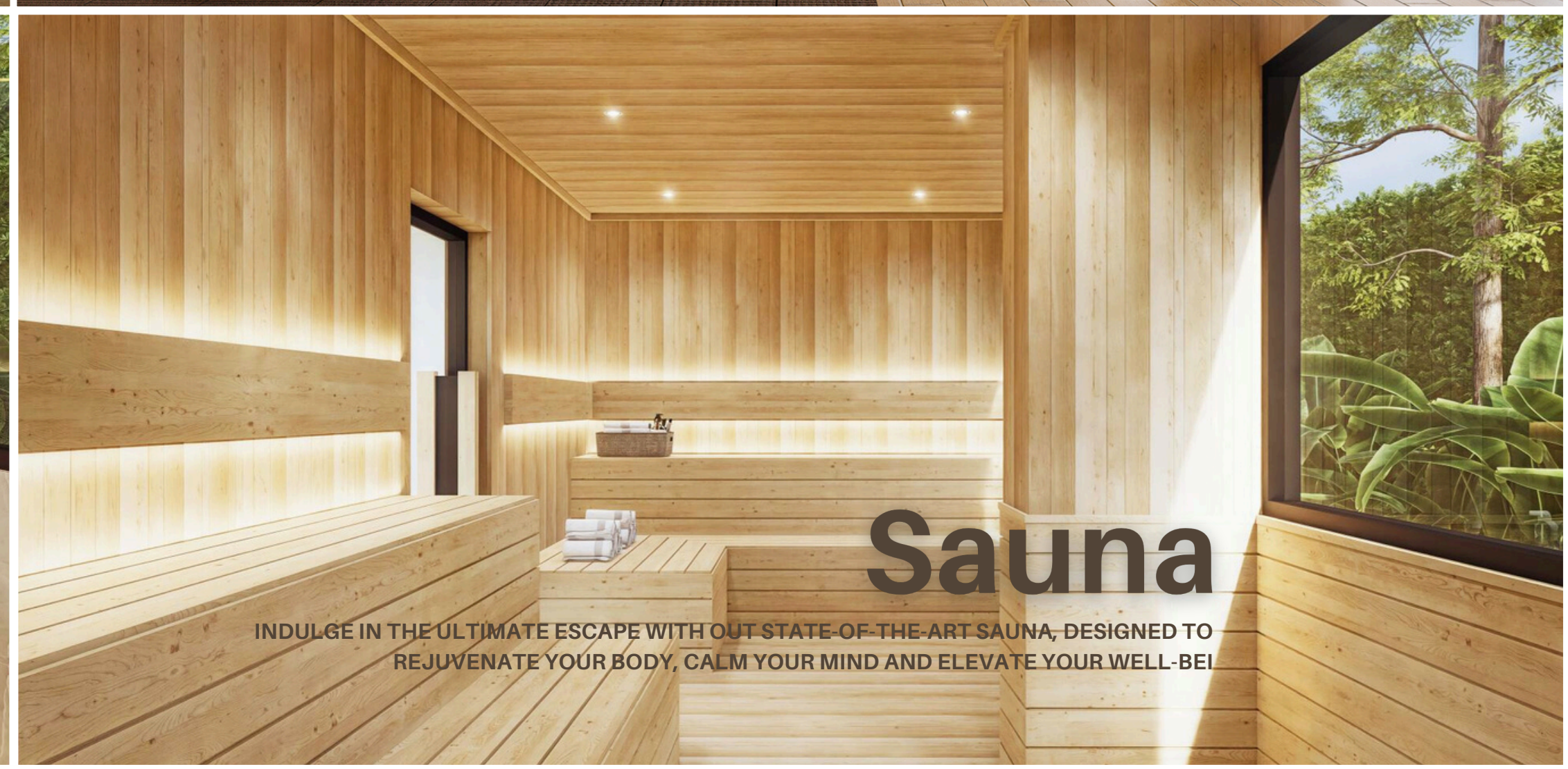
# Gym

ACHIEVE YOUR FITNESS GOALS IN A SUPPORTIVE ENVIRONMENT. WHETHER YOU'RE LOOKING TO LOSE WEIGHT, BUILD STRENGTH OR BOOST YOUR ENERGY. YOUR HEALTH IS YOUR GREATEST ASSET



# Steam

STEP INTO OUR STEAM EXPERIENCE. DESIGNED TO CLEANSE, CALM AND INVIGORATE, OUR STEAM ROOM ENVELOPS YOU IN A GENTLE MIST THAT NURTURES BOTH BODY AND MIND



# Sauna

INDULGE IN THE ULTIMATE ESCAPE WITH OUR STATE-OF-THE-ART SAUNA, DESIGNED TO REJUVENATE YOUR BODY, CALM YOUR MIND AND ELEVATE YOUR WELL-BEING

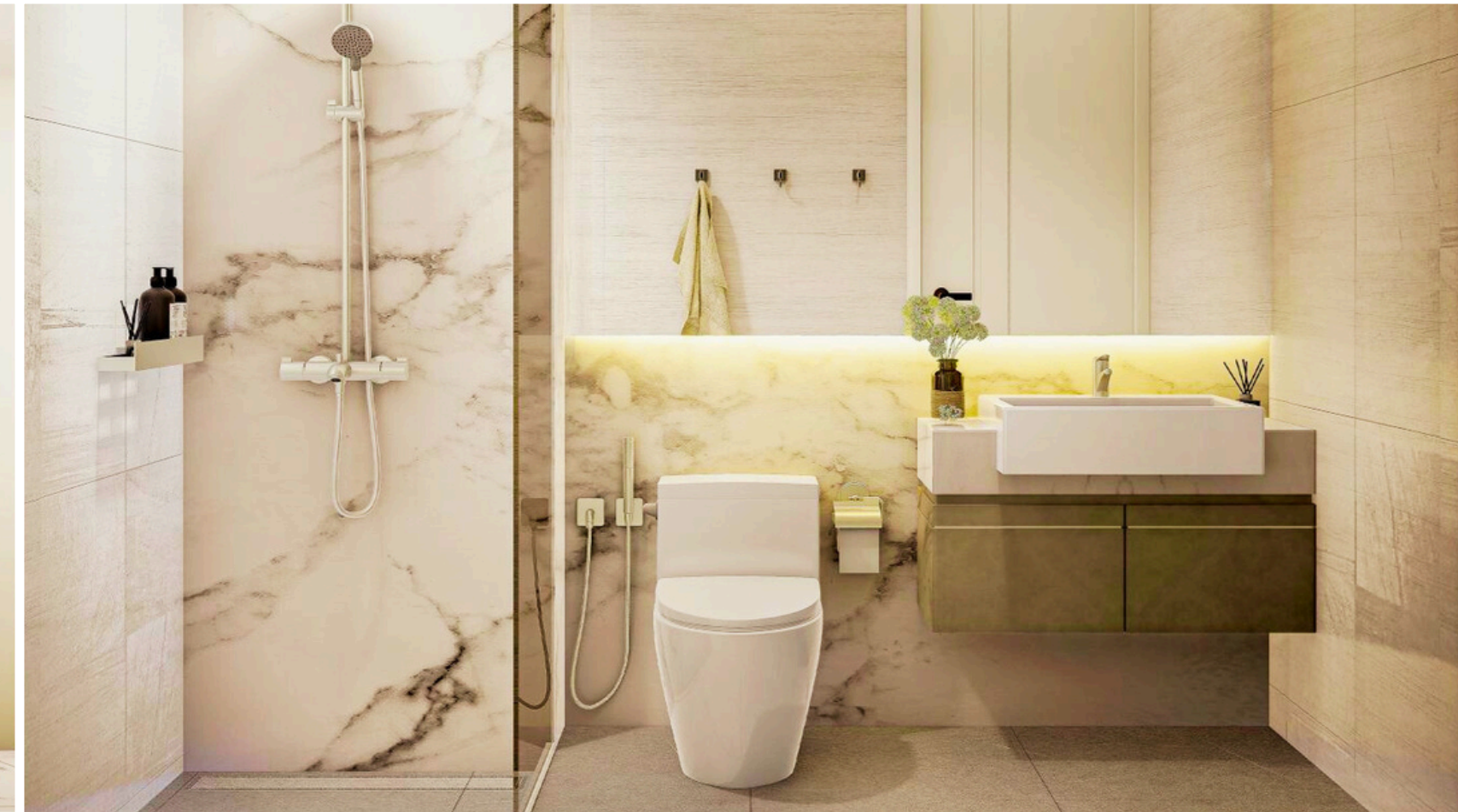


# WOKE UP IN THE MORNING AND SMILE AT THE RISING SUN

276 RESIDENCES  
HIGH QUALITY INTERIOR DESIGN



25.65 Sq.m.



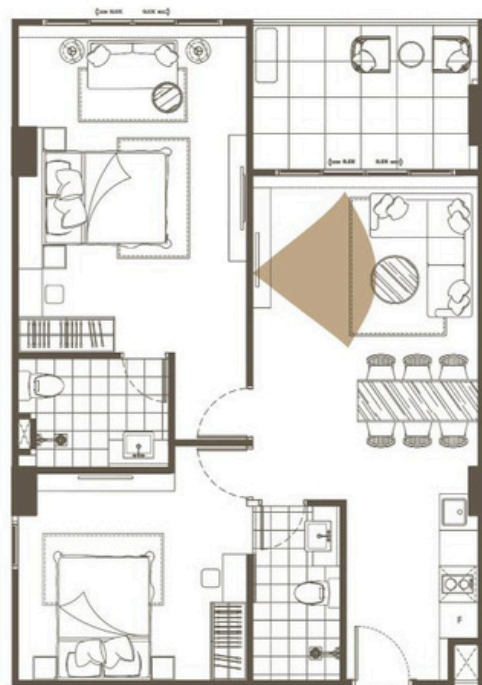
**STUDIO ROOM**  
16 Units  
25.60 - 25.65 Sq.m.



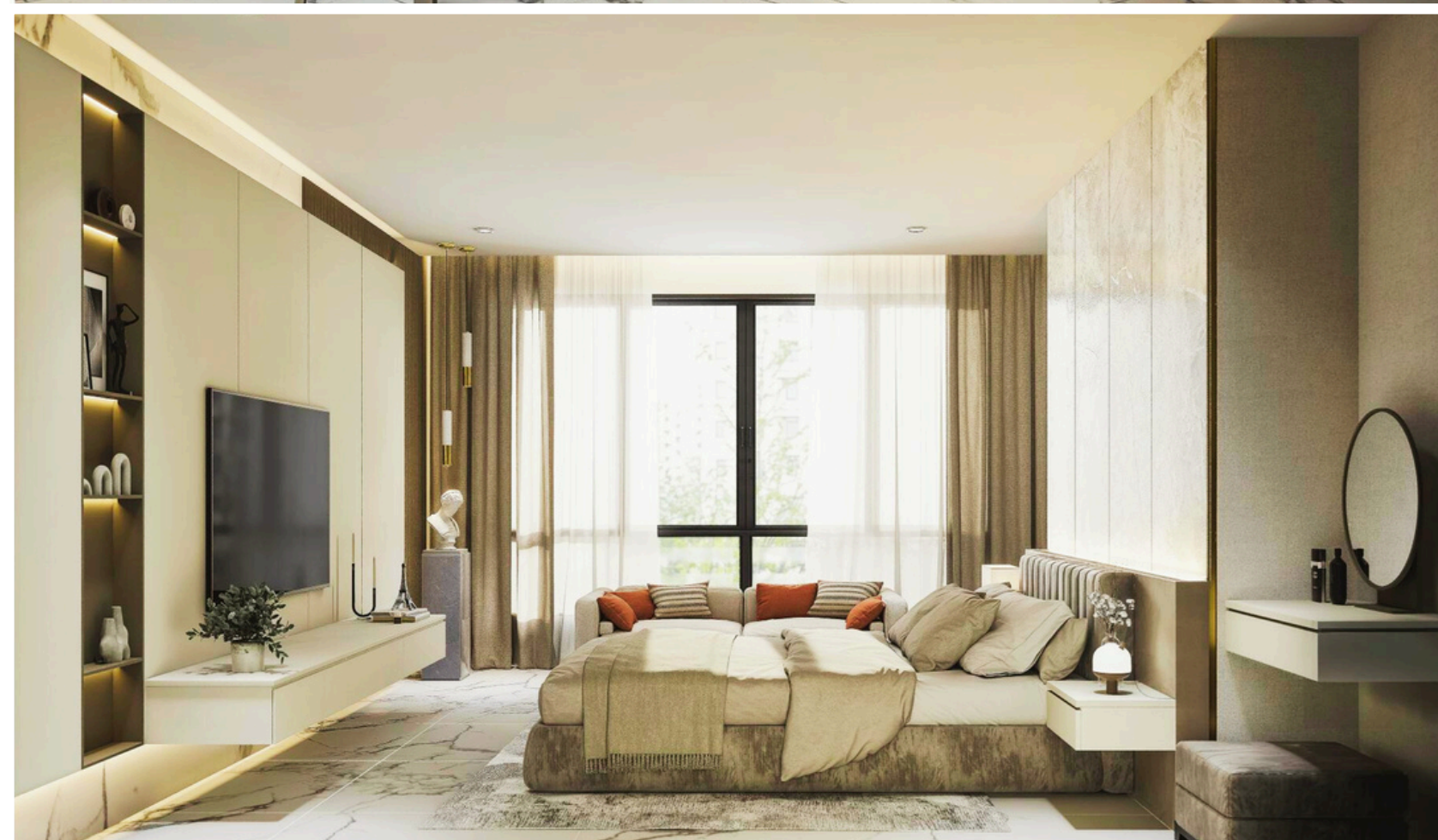
41.75 Sq.m.



**1 BEDROOM**  
209 Units  
34.55 - 56.90 Sq.m.



82.95 Sq.m.

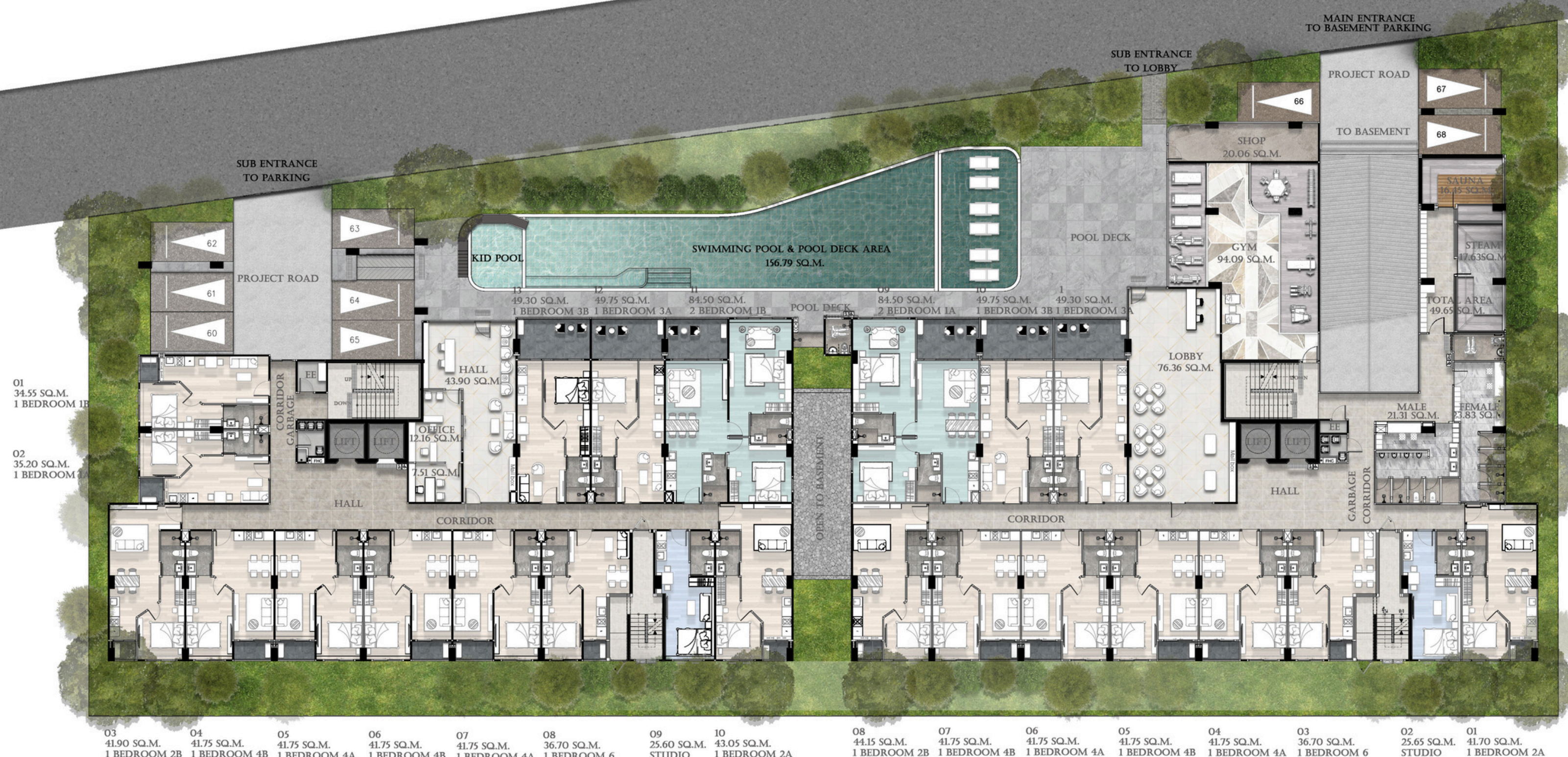


**2 BEDROOMS**  
51 Units  
55.15 - 84.50 Sq.m.



# 1ST FLOOR PLAN

LUXURY CONDOMINIUM RESIDENCES



## BUILDING B

## BUILDING A



# 2ND - 8TH FLOOR PLAN

SURROUNDED BY LUXURIOUS LIFESTYLE SOURCES, COMPLETE LIFE IN A PERFECT LOCATION IN THE HEART OF PATTAYA, WHERE YOU CAN TRAVEL CONVENIENTLY CONNECTED TO THE MAIN ROAD TO CENTRAL PATTAYA BEACH.



# WHEREVER YOU GO GO WITH ALL YOUR HEART

PERFECTLY POSITION  
Soi Buakhao 15, Pattaya

Avenue Boutique offers the ultimate blend of comfort and convenience. The iconic away Placing world-renowned nightlife and entertainment within easy reach. With seamless access to both Pattaya City and Jomtien Beach. This prime location is ideal for residents and investors seeking both tranquility and connectivity in one of Thailand's most dynamic coastal cities.

- 500 METERS FROM "PATTAYA BEACH"
- 600 METERS FROM "TREE TOWN NIGHTMARKET"
- 750 METERS FROM "MIKE SHOPPING MALL"
- 850 METERS FROM "TUKCOM"
- 1 KILOMETER FROM "CENTRAL FESTIVAL PATTAYA"
- 1.2 KILOMETER FROM "WALKING STREET"

